



**STEELTECH
KINETIX** ENGINEERING
THE IMAGE.



Contents

About	1.
Architectural	3.
Food and Pharmaceutical	5.
Signage	7.
Structural Steel	9.
Bespoke Manufacturing	11.
Gallery	13.

About

Founded in 1990, Steeltech Kinetix Ltd has continued steady growth. We have established a solid reputation for producing quality sheet-metal work and fabrication, focusing on client satisfaction and pride in what we produce.

Based in Todmorden, West Yorkshire, we work out of our own, purpose-built premises, ensuring we are able to provide the highest possible quality at the best possible price.

Our team are Time Served, highly skilled Metal Workers with years of experience between them.

The management team are themselves skilled Metal Workers. Starting on the shop floor, they learned the business inside out before buying the business from its original founder.

You couldn't be in better hands as a client of Steeltech.



Custom Design

Whatever your requirement, large or small, our design team will produce and install a bespoke product to meet your desired spec.

Latest Equipment

Our workshop is equipped with the latest specialist equipment to enable us to undertake all types of metal fabrication to the highest standard.

Focused Service

At Steeltech our commitment to quality and customer service is second to none. We strive to deliver on time, every time, providing a first class finished product.

Architectural

We commonly supply hand-railing, spiral staircases, door portals, fencing and gates, often in Stainless Steel and on prestige sites.

Every piece is bespoke and crafted to your specific need, all to the required current CE legislation.

3.



4.



5.



Food & Pharmaceutical

We have supplied Hoppers for the manufacturing industry, Conveyors for production lines and rise and fall tables for medical usage.

Specialised Conveyor systems can be made to any length and specification.

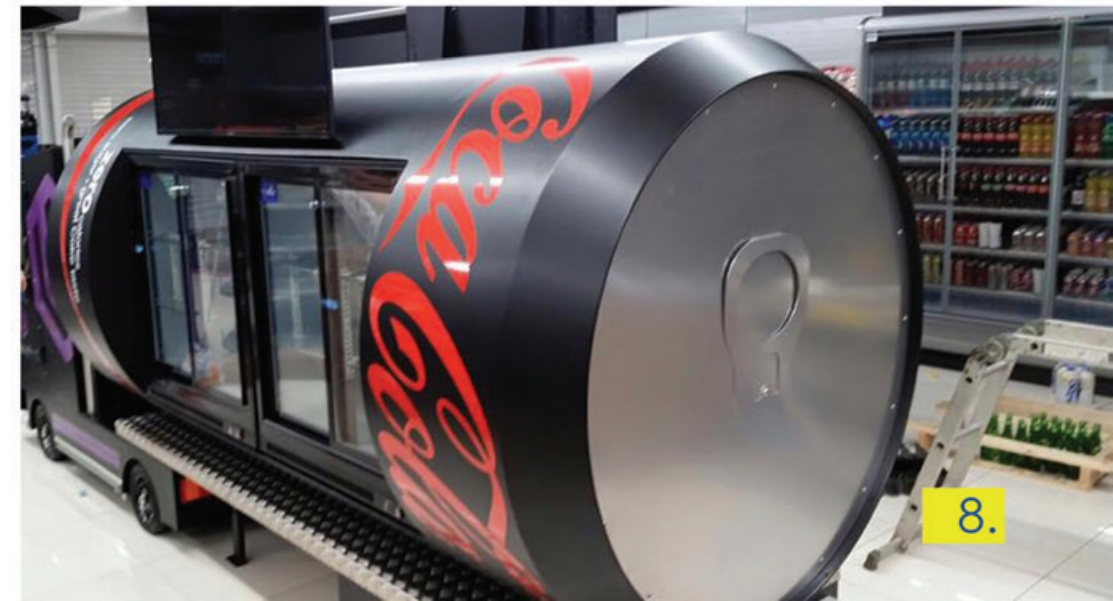
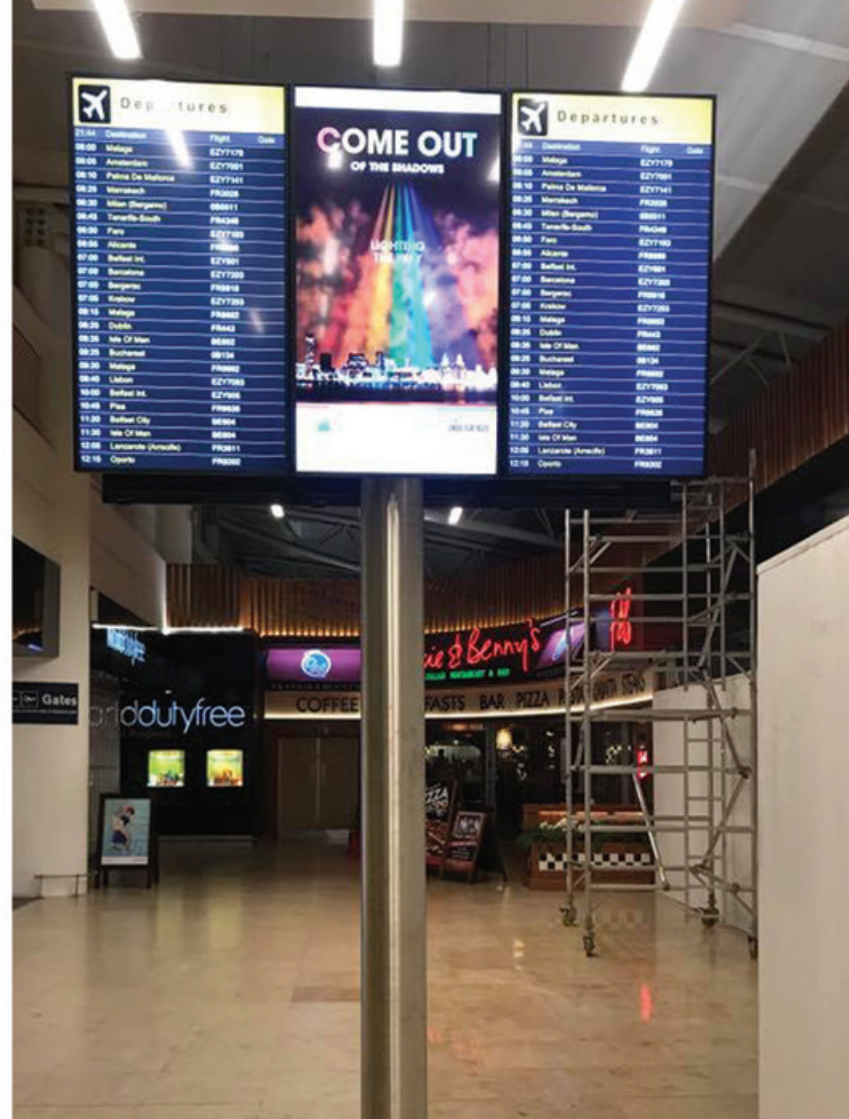
6.

Signage

We have produced signage metalwork for major Airports.

We can work to your own design and drawings, or visit your site to assess your requirements and produce a suitable design.

7.



8.



9.



10.

Structural Steel

We are a CE approved Manufacturer of Structural Steel items.

Working to CE Standard 1090, execution class 2, producing items such as Mezzanine Flooring, Balcony's, etc for house builds.

Bespoke Manufacturing

We regularly undertake bespoke design requests, such as Radiator Covers, Tables, Chairs, Sinks and Worktops.

We can work to your own design or produce one for you.



11.

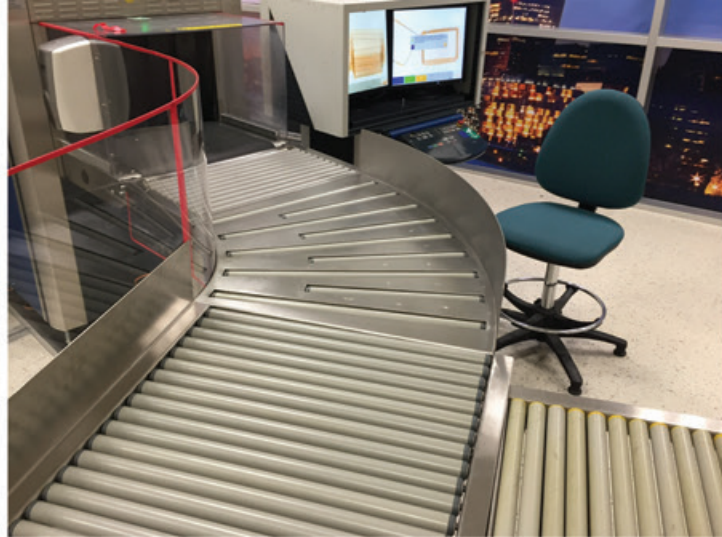


12.





15.



16.

Address:

Steeltech Kinetix Limited,
Dancroft Works,
Gauxholme Fold,
Rochdale Road,
Todmorden,
Lancs, OL14 7PW

Email:

info@steeltech-kinetix.co.uk

Phone:

(0)1706 817144



STEELTECH
KINETIX ENGINEERING
THE IMAGE.